

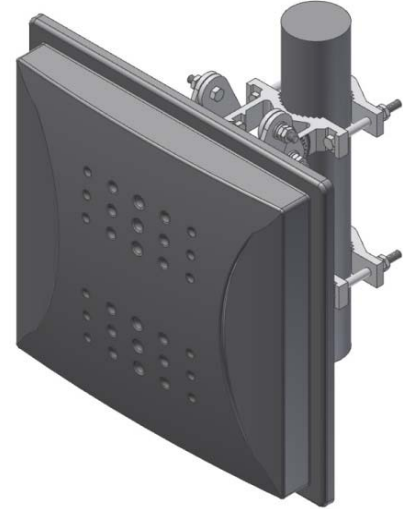
WCDMA ULTRA F-B Panel Antenna

1920 ~ 2170 MHz / 14 dBi

IMT-FBI-14

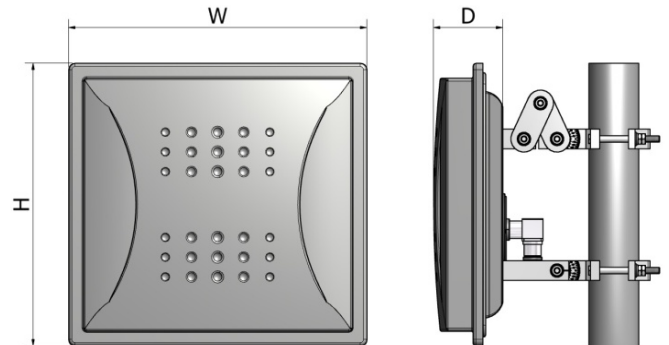
i. Electrical Specification

| | | |
|---------------------|-----------------|---------------------|
| Frequency Range | 1920 ~ 2170 MHz | |
| Polarization | Vertical | |
| Band Width | 250 MHz | |
| Gain | ≥ 14 dBi | |
| Beam width | Horizontal | 33° ± 3° |
| | Vertical | 35° ± 3° |
| F-B ratio | Horizontal | ≥ 35 dB @ 180 ± 90° |
| | Vertical | ≥ 35 dB @ 180 ± 90° |
| Sidelobe | ≥ 30 dB | |
| VSWR | 1 : 1.5 | |
| Impedance | 50 Ω | |
| Maximum input power | 50 W | |

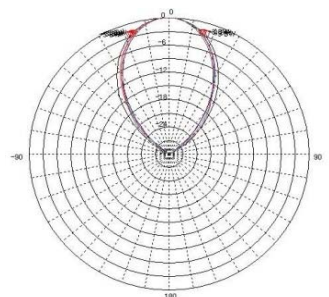


ii. Mechanical Specification

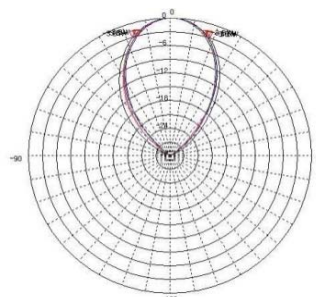
| | |
|--------------------------------|--------------------|
| Radom Dimension (H x W x D) | 430 x 455 x 110 mm |
| Weight (Include bracket) | ≤ 5.8 kg |
| Connector Type | 7/16" DIN -Female |
| Withstand Wind Pressure | 60 m/sec |
| Radome Material | ABS (내열제) |
| Radome Color | Cool Gray 4C |
| Mechanical Down Tilt | 0° ~ 20° |
| Temperature | -40 °C ~ 70 °C |
| Packing Size (H x W x D) SET | - |
| Packing Weight SET | - |



iii. Radiation Pattern



Horizontal Pattern



Vertical Pattern